

Design Considerations and Coil Comparisons for 7 Tesla Brain Imaging

Lawrence L. Wald¹, Graham C. Wiggins¹, Andreas Potthast², Christopher J. Wiggins¹, Christina Triantafyllou¹

¹MGH/MIT/HMS A. A. Martinos Center for Biomedical Imaging, Charlestown, MA, United States

²Siemens Medical Solutions, Erlangen Germany

wald@nmr.mgh.harvard.edu



INTRODUCTION

The development of 300MHz RF head coils analogous to those used at field strengths of 1.5T and 3T is complicated by increased dissipative losses in conductive tissue, effects arising from the short RF wavelength in biological tissue (~13cm at 300MHz), and the constraints imposed by the use of head gradient sets desirable for mitigating increased static field susceptibility effects. In this study, five RF head coils were constructed and tested on a 7T scanner including 2 TEM designs, 2 birdcage designs and a local receive-only array. SNR, coil reception profiles and interactions between the coil and dielectric head were examined. Particular attention was placed on the coil's reception in the neck and shoulders, where the head gradient is unable to unambiguously spatially encode the image.

METHODS

All imaging tests were performed on a prototype 7T human scanner (Siemens Medical Solutions, Erlangen, Germany). The scanner is built around a 90cm diameter 7T magnet (Magnex Scientific, Abingdon UK) equipped with both whole body gradients (Siemens Avanto) and a high performance 36cm inner dia. head gradient set, both permanently mounted in the magnet bore.

Four volume coils and 1 eight channel array coil were constructed and tested:

TEM coils (designated TEM_{large} and TEM_{small}). Inner diameters, lengths, and number of rungs were 27cm and 24.5cm, 24 and 32, and 18.5cm and 14cm. The outer shield was 31.5cm diameter for both coils, 1mil copper foil slotted and bridged with 10nF capacitors. The distributed series capacitance in the rungs was formed using the low-loss circuit board material (R03003 Rogers Corp., Rogers CT) as the dielectric and the copper as the capacitor plates. By staggering the overlap of copper on the two sides of the board, up to 7 series capacitors were built into each rung.

Birdcage coils. An endcapped high pass birdcage design (designated HPBC) whose dimensions matched TEM_{small} and an open-ended (no end cap) hybrid birdcage coil, 16 rung, 28cm dia, 19.5cm long (designated HybridBC) shielded only by the shield within the 36cm dia. head gradient set.

Linear circular surface coils array of 8, 8.5cm dia. designed on a flexible former to wrap tightly around the human head (1). The receive coils were actively detuned using a PIN diode across the lattice balun and TEM_{large} was used as a transmit coil.

7T Coil Designs



Figure 1: Photograph of the 5 coils. Left to right: TEM_{small}, TEM_{large}, High-Pass Birdcage (HPBC), Hybrid Birdcage (Hybrid BC), 8 channel receive array.

RESULTS

SNR profiles. Figure 2 shows the SNR profiles measured through the axial slice for each coil. The array coil showed significantly higher SNR at all depths for this slice. The signal reception profile of the array coil and volume coils are nearly complimentary. B1 measured as a function of distance along the center line of the coil with a shielded inductive pick-up probe as the empty volume coil was driven in quadrature at resonance suggested that the birdcage designs possessed a useful null in field in the neck region compared to the TEM design. This is also seen in B1 simulations (2).

Signal Reception in the Shoulders. Figure 3 shows the degree of signal reception in the shoulders for the 5 coils. Ratio of shoulder to white matter signal intensity ranged from 6.5% for the array to 36% for TEM_{Large}. Residual shoulder signal was seen to be effectively shielded or dephased using a flexible copper shoulder shield or a jacket with small pieces of Ferrous material sewed into the shoulder and chest region. With the dephasing jacket or jacket plus collar, the shoulder signal was less than the noise level.

Coupling into dielectric resonances. Figure 4 shows a comparison between axial and "end-on" surface coils at 7T. A significantly larger effect from coupling into the low-Q dielectric resonances is observed for the "end-on" surface coil. In contrast, the flat-against-head TR surface coil has a radial field distribution which appears to be ineffective in coupling into dielectric modes.

SNR Profiles

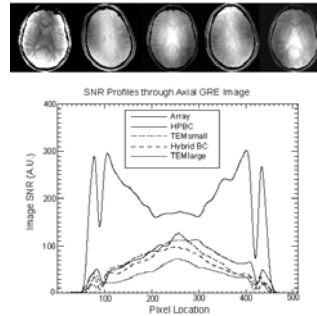


Figure 2: Signal to Noise profiles through an axial gradient echo image acquired with the 5 different coils. In order from left to right the proton density gradient echo images are from the receive array, the HPBC, TEM_{small}, Hybrid BC, and TEM_{large}.

Coupling into Dielectric Resonances

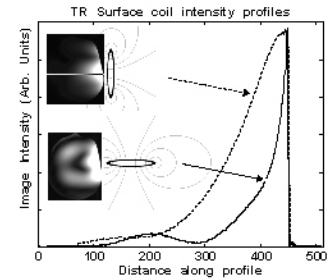


Figure 4: 7T axial image and image intensity profiles (L to R through image center) in gradient echo image for a 8.5cm diameter transmit-receive surface coil flat against the side of a phantom head model and on its end against the phantom. The phantom contained 1.2g of NiSO₄ and 2.62g NaCl per liter of water.

Signal Reception in the Shoulders

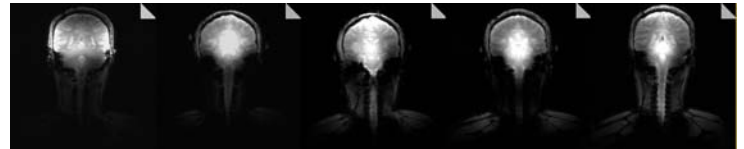


Figure 3: Images of the head and shoulders taken with each of the 5 RF coils in the whole-body gradient set. From left to right: receive array, HPBC, TEM_{small}, Hybrid BC, TEM_{Large}. The ratio of shoulder muscle to white matter brain signal intensity for each of these 5 coils was: 6.5%, 7.1%, 27%, 31%, 36% for the array, HPBC, TEM_{small}, Hybrid BC, and TEM_{Large} respectively.

CONCLUSION

All of the 7T coil designs could image effectively with expected increase in sensitivity from the smaller coils, but with subtle differences in field distribution, interaction with the dielectric boundary conditions of the head and detection in the neck and shoulders. In particular, the birdcage and array coils were found to have reduced B1 reception field profiles in the neck and shoulders which helped reduce signal detection outside the linear region of the head gradient coil. Residual artifacts from signal pick-up in the shoulders were effectively mitigated through use of a conductive shield or by small local de-phasing shims sewn into the shoulders of a jacket worn by the subject. The volume coil's B1 profile was strongly peaked in the center of the head, rendering them spatially complimentary to that observed in the surface coil array. The image profile of the surface coil array was found to be less dramatically changed from patterns observed at lower field strength.

REFERENCES:

1) Wiggins G, et al Proc. of ISMRM 2004, Kyoto p. XX 2) Wang C. et al Proc. of ISMRM 2004, Kyoto p. 487

ACKNOWLEDGEMENTS:

Support from the Office of National Drug Control Policy (ONDCP) Counterdrug Technology Assessment Center, the National Institutes of Health Grants P41RR14075 and the Mental Illness and Neuroscience Discovery Institute (MIND).